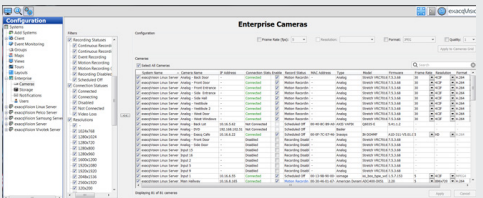
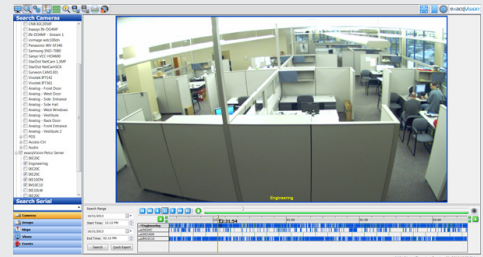
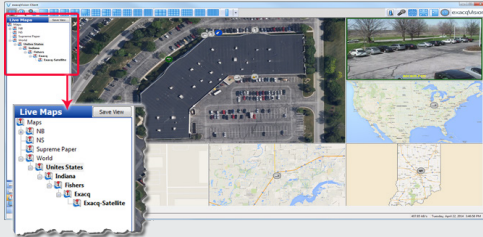


exacqVision Enterprise Large-Scale, Intuitive VMS Software



EasyConnect



• Large-Scale, Intuitive Video Management System (VMS) Features

- Effectively monitor video, audio and data in real time
 - Two-way audio
 - Interactive and multi-level mapping
 - Data integration from retail and access control systems
 - Notification overlays
- Conduct investigations on recorded video, audio and data
- VideoPush video wall sends video to another exacqVision user or public view monitor
- Constantly expand functionality with included regular software updates

• Multi-Server Administration

- Single-screen administration across multiple systems:
 - Cameras: Globally configure and monitor camera settings across the enterprise
 - Storage: Monitor storage health, configure S-Series storage connections
 - Users: Simultaneous administration of all users on multiple servers
 - LDAP/Active Directory Integration: standardized network administration
 - E-mail and Text Notifications: Quickly configure notification rules on all servers

• Enterprise System Manager

- Option to add Enterprise System Manager, a centralized health monitoring and software updating system available on a PC or mobile device

• Multi-Level Mapping

- Create hierarchical nesting of maps for faster camera and device navigation

• Ease of Use & Flexibility

- Requires little to no training
- Software installs in minutes
- EasyConnect automatically finds, assigns and addresses compatible IP cameras
- Easily add IP licenses at any time
- Per camera server licensing with no base server fee

• View Video Anywhere with Free Client Software

- Access live and recorded video on Windows, Linux or Mac PCs
- Use the free web service application with any modern browser
- Download the free exacq Mobile app available for iOS, Android, Windows Phone 8

• Highly Scalable

- Single client connects to thousands of servers
- Allows you to connect up to 64 analog and 128 IP cameras on exacqVision hybrid servers
- Offers high video throughput with minimal CPU and RAM requirements necessary

• Build a Best-of-Breed Physical Security System

- Integrates with:
 - Over 2,000 IP cameras and encoders from over 60 manufacturers
 - 20 access control systems
 - Video analytics solutions for LPR, heat mapping and intrusion detection
 - Retail/point-of-sale analytics

• Constantly Expanding Functionality with Included Software Updates

- Get more video management features without replacing your entire VMS
- Includes 1 year free software updates (three years on exacqVision NVRs)

CLIENT WORKSTATION MINIMUM HARDWARE REQUIREMENTS	TYPICALLY FOR VIEWING 1-4 ANALOG CAMERAS
Processor	Intel® Celeron® G540 or higher
RAM	1 GB
Hard Drive	40 GB
Video	Intel HD (on-CPU GPU)
Operating Systems	Microsoft® Windows XP, server 2003 (minimum), Ubuntu 8.04 or higher
VMS SERVER HARDWARE MINIMUM REQUIREMENTS	TYPICALLY LESS THAN 50 MBPS CAMERA TRAFFIC, 1-2 SIMULTANEOUS REMOVE CLIENTS
Processor	Intel® Atom D525 1.8GHz or higher
RAM	2 GB
Hard Drive	60 GB (OS) + 250 GB (video) > 15 MBps non-sequential write
Operating System	Microsoft® Windows 7 Pro, Microsoft® Server 2003, Ubuntu 8.04 or higher
NIC	1 Gbps
WEB BROWSER ACCESS	
Compatibility	Internet Explorer, Firefox, Safari, Opera, Chrome
MOBILE DEVICE ACCESS	
Compatibility	iOS, Android, Windows Phone 8

exacqVision Enterprise VMS Software is available on exacqVision servers:

exacqVision **Z-Series**



exacqVision **A-Series**



exacqVision **ELP**



Related Products



exacqVision Hybrid & IP Camera Servers



exacqVision Enterprise System Manager (ESM)



exacqVision Virtual

www.exacq.com