

# SIEMENS



## MM8000 – safety and security with smart danger management

A scalable and flexible management station for any requirement

Answers for infrastructure.



# Sophisticated technology for comprehensive safety

Safety and security are central features in both commercial and domestic life. The growing potential of danger to both people and assets makes the need for better protection increasingly relevant. This is why investments in security technologies have risen over the past several years. Yet the more diverse and complex the risks, the more important it is to have an intelligent management station that can manage all aspects of safety and security.

# MM8000 – ideal solution for danger management

## Highest possible level of safety from one source

The MM8000 danger management station offers a one-source management application to secure the safety of people and facilities. The powerful station enables centralized alarm management and supervision of a wide range of fire safety, electronic security and control systems. No matter how many subsystems are connected, MM8000 displays them all in a uniform, clearly structured manner. The intuitive user interface allows users to easily and safely operate the system even under stressful conditions.

## Secure investment in future-proof technology

MM8000 is a flexible and scalable management station with an open architecture. In case requirements or the building structure change, it can be quickly and easily adapted and modified. As MM8000 supports single and multiple operator work stations, an installation can be expanded at any time. MM8000 is a future-oriented safety product and ensures long-term investment protection. Moreover, the danger management station allows not only the integration of fire safety, electronic security and building automation systems from Siemens, but also of third-party solutions via standard interfaces.

## Efficient configuration and easy operation

With its user-friendly engineering tool, the MM8000 danger management station can be configured quickly and easily. The powerful graphics engine supports existing AutoCAD files and thus offers the operator a comprehensive system overview: Icons placed on graphics display the current state of the equipment. Alarms and messages are clearly listed according to security-relevant priorities, giving operators all important information at a glance. In case of an event, MM8000 guides the user step by step through predefined procedures.

## MM8000 Express – a lean solution

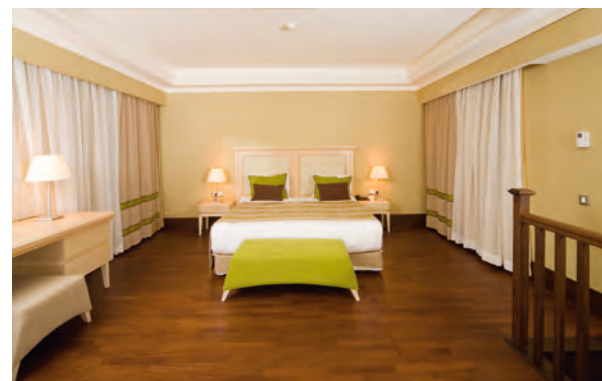
MM8000 Express is a lean and cost-effective version of the MM8000 danger management station. The Express version is ideal to centrally control and operate fire protection systems from Siemens. Providing graphic support and simple operation, MM8000 Express gives a clear overview of where a fire alarm originated and gives comprehensible instructions on what to do.

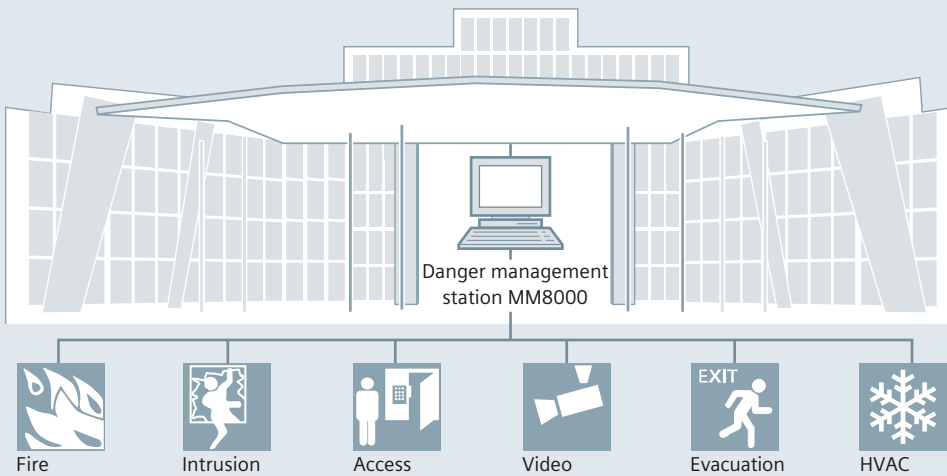
## Siemens – a synonym for quality

Products and solutions from Siemens are backed by over 160 years of experience and know-how – and are valued around the world for their high quality. The company is known for innovation power and technology leadership and is strongly committed to sustainability and environmental protection.

## Highlights

- Sophisticated management station, backed by decades of expertise
- Centralized alarm management and supervision
- Outstanding guidance capabilities during event treatment
- High configuration flexibility to support the required safety and security strategy
- Open architecture and scalability from small to large systems
- MM8000 Express – lean version tailored for fire safety applications requiring graphic support and simple operation





Multiple disciplines can be centrally monitored with MM8000.

# A future-proof solution for various applications

MM8000 is a scalable danger management station with an open architecture, designed to manage a wide range of different subsystems in small to large applications.

## Easy integration of subsystems

Fire safety, intrusion detection, access control, video surveillance and building automation installations – MM8000 easily integrates subsystems from Siemens or from third parties via standard interfaces such as OPC, BACnet™ or Modbus. The integration of multiple disciplines provides centralized supervision and alarm handling, and allows interactions between the disciplines to enhance overall safety and security.

## MM8000 – centrally protecting a wide range of applications

Whether in public buildings or industrial plants, the safety of people and assets always has top priority. MM8000 is the ideal solution for a wide range of applications, such as:

- High-tech industries like car manufacturers or pharmaceutical companies
- Modern public buildings such as banks, office buildings or shopping malls
- Transportation infrastructures like airports, railway stations, metro stations and tunnels

## Protecting large premises with different requirements

Pharmaceutical companies, for example, have one of the highest safety standards to guard their premises. Various systems ensure the safety and security of employees and protect valuable equipment and know-how from fire, burglary or unauthorized access. With MM8000, all buildings can be centrally and effectively monitored and critical incidents discovered and handled straight away.

## Efficiently managing fire safety with MM8000 Express

The Express version offers central control and operation of fire protection systems from Siemens. It is built for applications with up to four control panels and 2,000 detectors and peripheral devices like:

- Small hotels, retail stores, office buildings
- Neighborhood schools, smaller recreation centers
- Low-risk industries



With MM8000, office buildings can be monitored from one central point.

#### Expandable to meet any requirement

Whether the lean or the full version, the danger management station is a safe investment and can be adapted if needs or requirements change in the future. MM8000 Express can be quickly and easily upgraded to the full version MM8000. MM8000 is expandable too: Subsystems can be added at any time.

#### High flexibility and scalability for any network size

The open and modular architecture of MM8000 supports a large range of network configurations. Ideal for small-sized applications is a single workstation containing all software levels from client to server and communication. For medium-sized applications, multiple operator workstations can be connected via Ethernet (LAN) to a central server.

A distributed client/server architecture is ideal for large applications with multiple operation responsibilities: A server station provides communication and background functions to one or more networked client workstations connected via WAN.

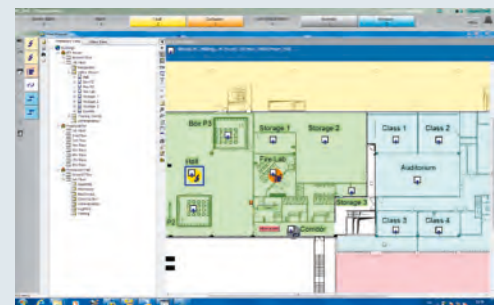
Since the server coordinates all activities, many operators can seamlessly cooperate on the same site. What's more, the buildings do not have to be geographically close, but can be located far apart – even in different cities. For increased reliability, network connections can be set up redundantly.

#### Based on open standards

Whether hardware or software, the open architecture of MM8000 is based on the latest standards: standard PC hardware, Microsoft Windows, MS-SQL server databases, OPC, BACnet, TCP/IP networks and the AutoCAD drawing format. Third-party subsystems can be integrated cost-efficiently via a generic OPC client or by using Modbus. Furthermore, a built-in OPC server allows MM8000 to be connected to third-party management stations.

#### Highlights

- MM8000 integrates various safety and security disciplines
- MM8000 covers a wide application range
- MM8000 Express is ideal to centrally operate a fire protection system from Siemens
- Both MM8000 Express and MM8000 can be easily expanded at any time



Comfortable navigation via graphical maps and object trees: with two clicks from the overview to the details.

## Simple operation ensures safe event handling

In an emergency situation, it is of highest importance that security personnel react safely. The clearly structured user interface provides a quick overview and supports users during event handling.

### Smooth configuration and easy operation

MM8000 and MM8000 Express can be quickly engineered and installed. Engineering costs can be reduced to a minimum because the powerful configuration tool provides the possibility to smoothly incorporate existing AutoCAD files. The user interface is intuitive and easy to learn – without extensive training. During operation, MM8000 behaves exactly according to the established procedures.

### Homogeneous user interface for easy handling

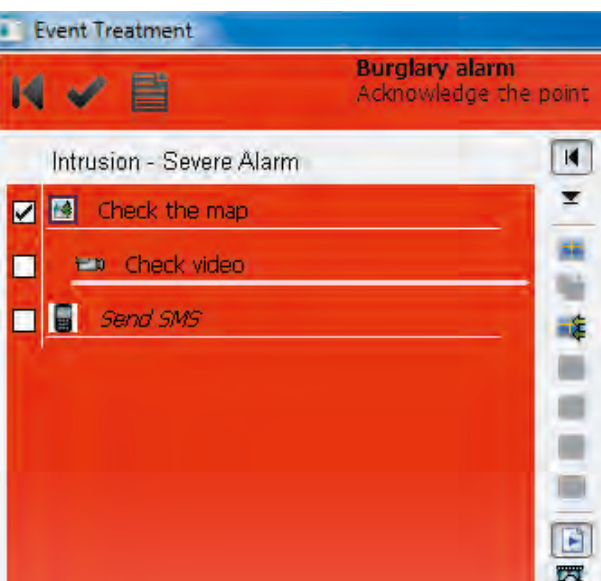
In cooperation with scientists, Siemens designed the homogeneous user interface of both MM8000 and the Express version specifically for danger management. Alarms, messages and the current system status are displayed in a clear and uniform manner.

### Clear visualization for a quick overview

MM8000 and MM8000 Express include a powerful vector graphic engine that supports AutoCAD drawings and enables users to navigate through the individual zones of a facility. The zones are displayed in a hierarchical tree view or a graphical view. Thus, a building, floor, room or individual object can be quickly located and displayed on the screen – and viewed in detail thanks to a zoom function. In case of an alarm, the operator can quickly and precisely locate where it was triggered. Furthermore, simple icons illustrate the current state of various objects and detailed information is available with only one mouse click.

### Selecting the most important event

Both MM8000 and the Express version immediately display all alarms and events. As the most critical are always placed on top, operators know which alarms are the most crucial ones. When a new entry is added to the list, the corresponding lamp is flashing, the accompanying counter is incremented and an acoustic signal sounds.



The operator selects the event he wants to treat. He is then automatically guided through a predefined procedure in a simple and intuitive way.

#### Following recommended procedures

To ensure correct response in a critical and stressful situation, MM8000 safely guides the operator step by step through predefined procedures via action texts, intervention plans, graphics and other means. Only those options and command buttons that are relevant to the current event are visible. This allows the operator to concentrate on the main steps and to take the right measures – preventing the potential danger of wrong decisions.

#### Secure guidance through an event

Each building or business requires different actions. MM8000 impresses with its extraordinary flexibility: Specific steps can be freely defined and adapted to individual requirements. After selecting an event, the whereabouts in the building are shown and the operator can quickly locate the source of the alarm. Video surveillance is switched on automatically for live images, recording or playback. An instruction page presents information on the necessary intervention steps. The fire department, police department or other organizations can be notified either manually or via an automatic dial-up connection.

#### Scheduler application for predefined functions

The scheduler of MM8000 helps the operator execute daily operations in an efficient way. Time-dependent actions can be defined and programmed. It is also possible to generate multiple organization modes that define how the system will behave during a certain period of time. New tasks can be created as needed and already defined tasks modified at any time.

#### Keeping track of all events and actions

The history database of MM8000 and of MM8000 Express automatically logs all events and operator activities, in order to reconstruct them at a later point in time. Long-term information on the system's status can be used for statistical analyses and report generation.

#### Highlights

- Intuitive user interface allows easy navigation and provides a quick overview
- User interface supports fast and correct reaction in a stressful situation
- Events are automatically sorted by priorities
- History database to reconstruct activities and obtain long-term information

Siemens Switzerland Ltd  
Infrastructure & Cities Sector  
Building Technologies Division  
International Headquarters  
Gubelstrasse 22  
6301 Zug  
Switzerland  
Tel +41 41 724 24 24

The information in this document contains general descriptions of technical options available, which do not always have to be present in individual cases. The required features should therefore be specified in each individual case at the time of closing the contract.

© Siemens Switzerland Ltd, 2012

#### **Answers for infrastructure.**

Our world is undergoing changes that force us to think in new ways: demographic change, urbanization, global warming and resource shortages. Maximum efficiency has top priority – and not only where energy is concerned. In addition, we need to increase comfort for the well-being of users. Also, our need for safety and security is constantly

growing. For our customers, success is defined by how well they manage these challenges. Siemens has the answers.